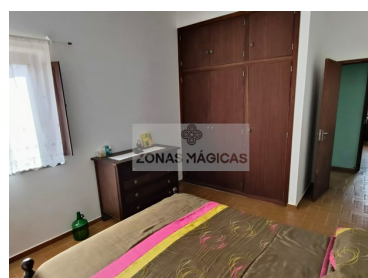
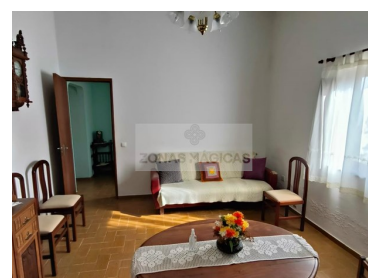




Luz - Farmhouse



2	1	90	7400	N/A
Bedrooms	Bathrooms	Area (m ²)	Land Area (m ²)	(EUR €)

Farm in Almadena (Luz - Lagos)

Small farm with a huge potential in Almadena (Praia da Luz).

With an area of 90m² in need of some attention but extremely well located.

With a plot of land of 7400m² of total area, with a lot of cultivation and fruit trees.

It has a 45-meter borehole with all the equipment in operation, as well as the water retention tank for proper agriculture.

The house has been closed for a few years, with visible signs that it needs some internal and external investment.



João Santo

913389223 ²

grupo.zonasmagicas@gmail.com

T +351 913 389 223 ² · T +351 912 753 689 ² · E zonasmagicas.lda@gmail.com

Estrada Nacional 125 nº43A, Odiáxere
AMI 15213

¹ (Call to national fixed network) | ² (Call to national mobile network)



Within the urban area, this small farm has a huge potential due to part of its land being in the consolidated construction area, where it is possible to build even more!

We advise a more detailed analysis, but from what we have analyzed it is possible to build three more villas on three different plots with very generous areas.

Don't miss this opportunity to acquire this farm that can be transformed into your dream farm.

MAGIC ZONES and its agents are available to assist you in acquiring this property.

Property Features

- Garden
- Patio
- Terrace
- water hole
- open garage
- Built year: 1984
- Energetic certification: E
- septic tank



João Santo

913389223 ²

grupo.zonasmagicas@gmail.com

T +351 913 389 223 ² · T +351 912 753 689 ² · E zonasmagicas.lda@gmail.com

Estrada Nacional 125 nº43A, Odiáxere
AMI 15213

¹ (Call to national fixed network) | ² (Call to national mobile network)